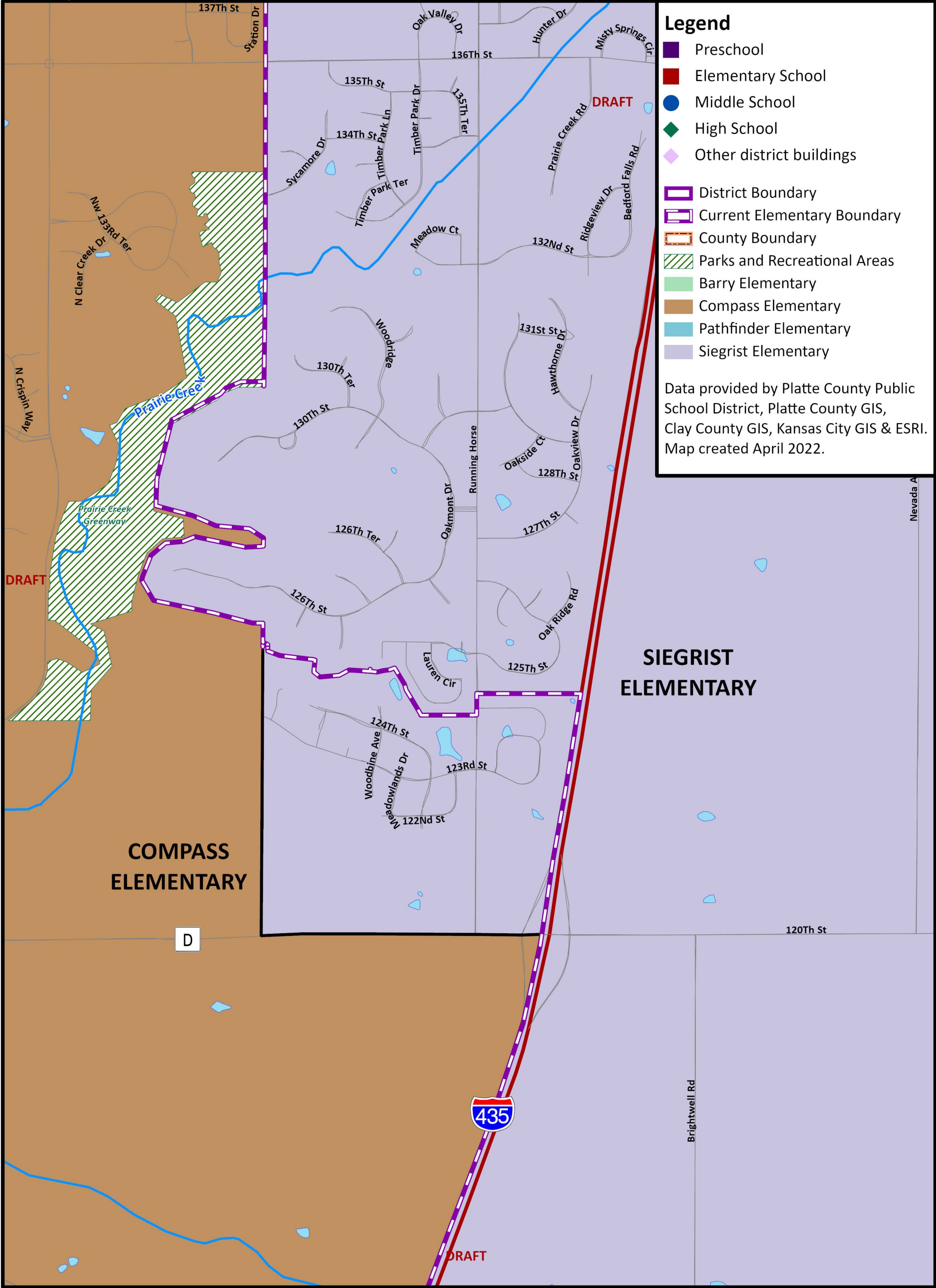




# Recommended Concept: Elementary Boundaries

## Compass and Siegrist Solution

Updated 04/11/22





# Recommended Concept: Elementary Boundaries

## Compass and Siegrist Solution

Redistricting Concept Projections											
School	Current Boundaries		2023/24 Building Capacity	Proposed Concept							
	2023/24 -2026/27			2023/24		2024/25		2025/26		2026/27	
	Total	%		Total	%	Total	%	Total	%	Total	%
Compass Elementary	589 to 631	96% to 103%	607	518	85%	523	86%	517	85%	523	86%
Siegrist Elementary	545 to 493	80% to 73%	675	619	92%	614	91%	619	92%	600	89%
Total			2,353	1,958	83%	2,009	85%	2,088	89%	2,161	92%

Source: RSP and Platte County School District, 2022

Updated: 04/11/22

- Notes:
- Areas in orange show when student enrollment exceeds the building capacity
  - Projections for each planning areas are rounded at the building level which may results in different totals between current boundary projections and concept projections
  - Current projections use the 21/22 boundaries and 21/22 grade configurations

Current K-3 Students Impacted in Boundary Change					
Current Reside		Proposed Concept Reside		SIBC	
		Barry	Siegrist	Total	%
Compass	378		40	40	10.6%
Pathfinder/Barry	494	218		218	44.1%
School Total	1,242	218	40	258	20.8%

Source: RSP and Platte County R-3 School District, 2022

Updated: 04/11/22

- Notes:
- Currest Reside is the current boundary where the students attend (Column 1)
  - Proposed Concept Reside is the boundary where the students would attend if this concept is approved
  - SIBC is based on the current K-3rd graders in the 21/22 school year

Proposed Concept: Existing and Potential Units by Development Type								
	Existing Units							
	Single-Family		Mutli-Family		Townhomes/ Duplex		Mixed Use	
	Units	Percent	Units	Percent	Units	Percent	Units	Percent
Compass	1,380	40%	385	39%	369	42%	499	99%
Siegrist	2,056	60%	590	61%	513	58%	3	1%

Source: RSP and Platte County

Updated 04/11/22

Demographic Analysis		
	Current Boundaries	Proposed Concept
	Free or Reduced Lunch Students	Free or Reduced Lunch Students
Compass (K-5)	19.1%	18.9%
Siegrist (K-5)	20.6%	20.6%
District K-5 Total	22.0%	22.0%

Source: RSP and Platte County R-3 School District, 2022

Updated: 04/11/22

- Notes:
- Barry School does not have current elementary boundaries for this analysis. For comparison, all current K-5 students are included in Pathfinder.
  - Student enrollent provided by Platte County R-3 School District

Potential Units by Growth Area Type						
Proposed Concept	Current		5-year		10-year	
Compass	174	37%	425	100%	275	38%
Siegrist	301	63%	0	0%	450	62%

Source: RSP and Platte County

Updated: 04/11/22

### MAIN TAKEAWAYS:

- + Compass Elementary decreases from 103% utilization to 85 to 86% utilization in this concept
- + Current demographics of the two school is maintained in the proposed concept
- + 40 current K-3 students are impacted
- + Current units between the two schools are divided by type of development ensuring both schools include diverse types of housing
- + Both schools include growth areas to balance future enrollment

*Note: The tables provided are to be used as a guide for discussion on the concept and provide constructive talking points for the PC-3 Public Feedback Sessions.*

